

PLEASE READ

This manual is provided as a free service by Projector.com.

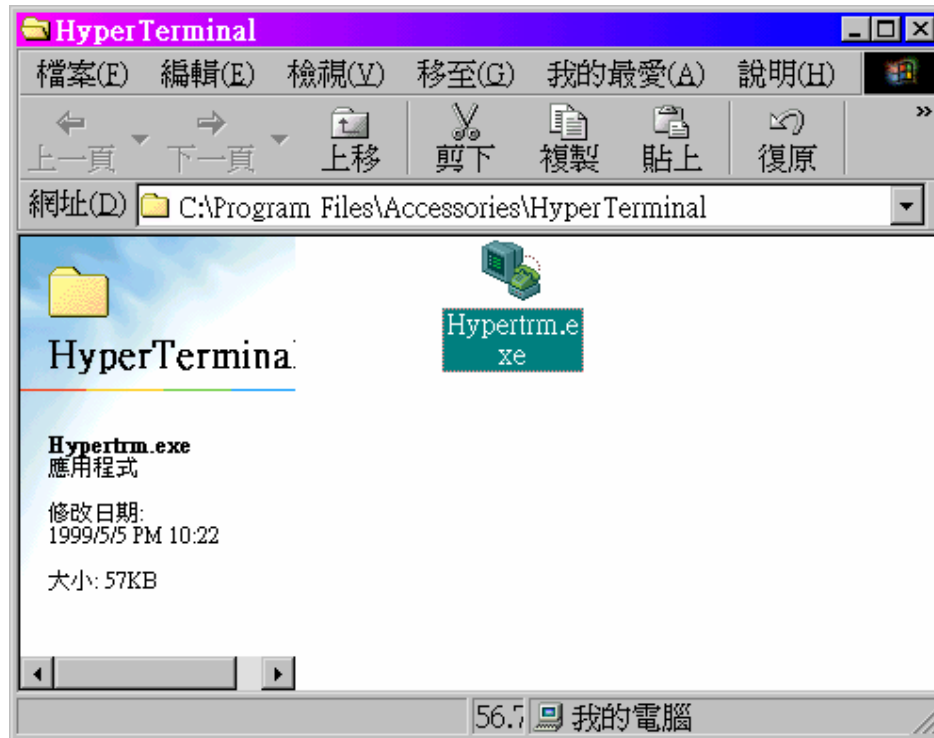
We are in no way responsible for the contents of the manual. We do not guarantee its accuracy and we do not make any claim of copyright. The copyright remains the property of their respective owners.

ABOUT PROJECTOR.COM

Projector.com (<http://www.projector.com>) is your review and buying guide resource for DLP and LCD video projectors.

Visit the site to read the latest projector news and reviews, read and comment on projector specifications, download user manuals and much more.

1. Set up peripherals

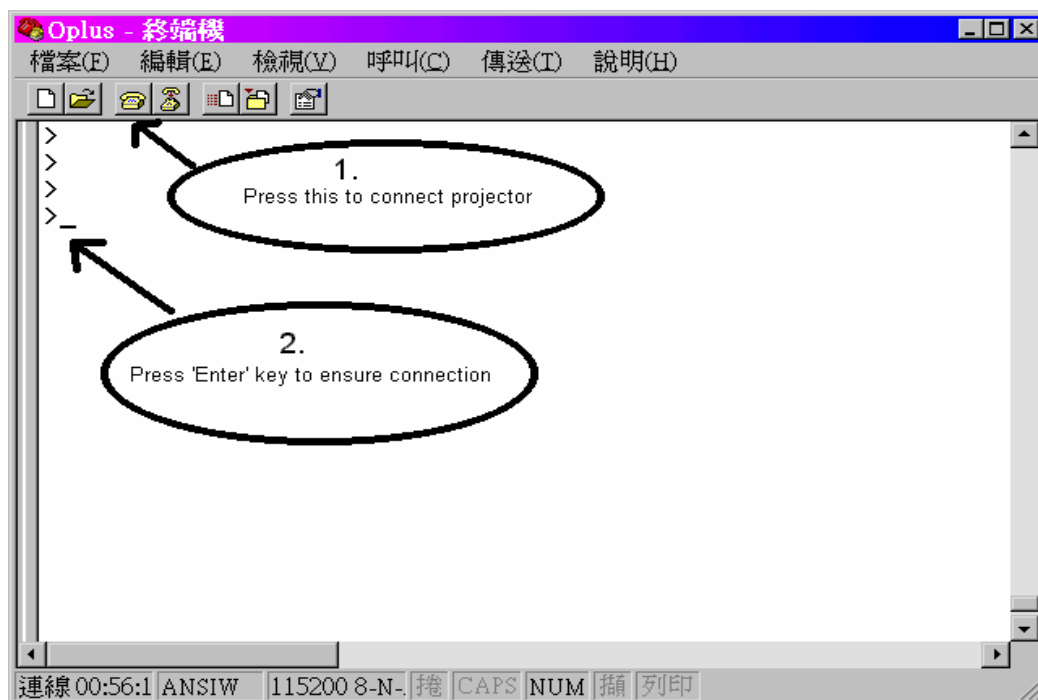


To set the settings of serial port first is necessary. Choose which COM port you want to connect, and set its settings as below:

Baud Rate:	115200
Parity:	None
Data bits:	8
Stop bits:	1
Flow Control:	None



After settling down, connect our specific RS232 cable and press the 'call' icon of 'Hyper Terminal' program. After this, press 'Enter' key, if an '>' symbol come up, that means the unit is ready to accept commands for computer.



PLEASE READ

This manual is provided as a free service by Projector.com.

We are in no way responsible for the contents of the manual. We do not guarantee its accuracy and we do not make any claim of copyright. The copyright remains the property of their respective owners.

ABOUT PROJECTOR.COM

Projector.com (<http://www.projector.com>) is your review and buying guide resource for DLP and LCD video projectors.

Visit the site to read the latest projector news and reviews, read and comment on projector specifications, download user manuals and much more.